

### Schedule 2 - Agreement Area Written Description

Page 1 of 1

#### Indjalandji-Dhidhanu People Undilla Pastoral ILUA

The agreement area includes all of the land and waters within Lot 2562 on PH2051 (Seymour Junction), Lot 5303 on PH1640 (Harris Creek) and Lot 1 on UN8 (Promised Land) located within the proposed Native Title Determination QUD243/09 Indjalandji-Dhidhanu (QC09/3) being an area described below:

Lot 5303 on PH1640, Lot 1 on UN8 and that part of Lot 2562 on PH2051 south of the southern banks of the O'Shannassy and Seymour Rivers.

#### Note

##### Data Reference and Source

- Agreement boundary data compiled by National Native Title Tribunal.
- Cadastral data sourced from Department of Natural Resources and Mines, Qld (1 August 2012).
- Rivers / Creeks based on cadastral data.
- Proposed Native Title Determination QUD243/09 Indjalandji-Dhidhanu (QC09/3) as supplied by The State of Queensland – Draft copy dated 2 August 2012.

##### Reference Datum

Geographical coordinates have been provided by the NNTT Geospatial Services and are referenced to the Geocentric Datum of Australia 1994 (GDA94), in decimal degrees and are based on the spatial reference data acquired from the various custodians at the time.



##### Use of Coordinates

Where coordinates are used within the description to represent cadastral or topographical boundaries or the intersection with such, they are intended as a guide only. As an outcome to the custodians of cadastral and topographic data continuously recalculating the geographic position of their data based on improved survey and data maintenance procedures, it is not possible to accurately define such a position other than by detailed ground survey.

Prepared by Geospatial Services, National Native Title Tribunal (21 September 2012).

*P:\GEO\_INFO\Products\QLD\_ILUA\2012\_QIA\2012\_107 Indjalandji-Dhidhanu People Undilla Pastoral ILUA\Mapping\GT2012\_1629 Map & Desc\20120921\_QIA2012\_107\_Description.doc*

# Indjalandji-Dhidhanu People Undilla Pastoral ILUA

-  Indjalandji-Dhidhanu People Undilla Pastoral ILUA
-  Indjalandji-Dhidhanu People Proposed Determination

Map created by: Geospatial Services, National Native Title Tribunal (21/09/2012)  
 Agreement boundary data compiled by NNTT. Proposed Determination boundary supplied by State of Queensland (2 August 2012). Topographic vector data is © Commonwealth of Australia (Geoscience Australia) 2003. Cadastral data sourced from Department of Natural Resources and Mines, Qld (1 August 2012). & NT Department of Lands and Planning (March 2012).

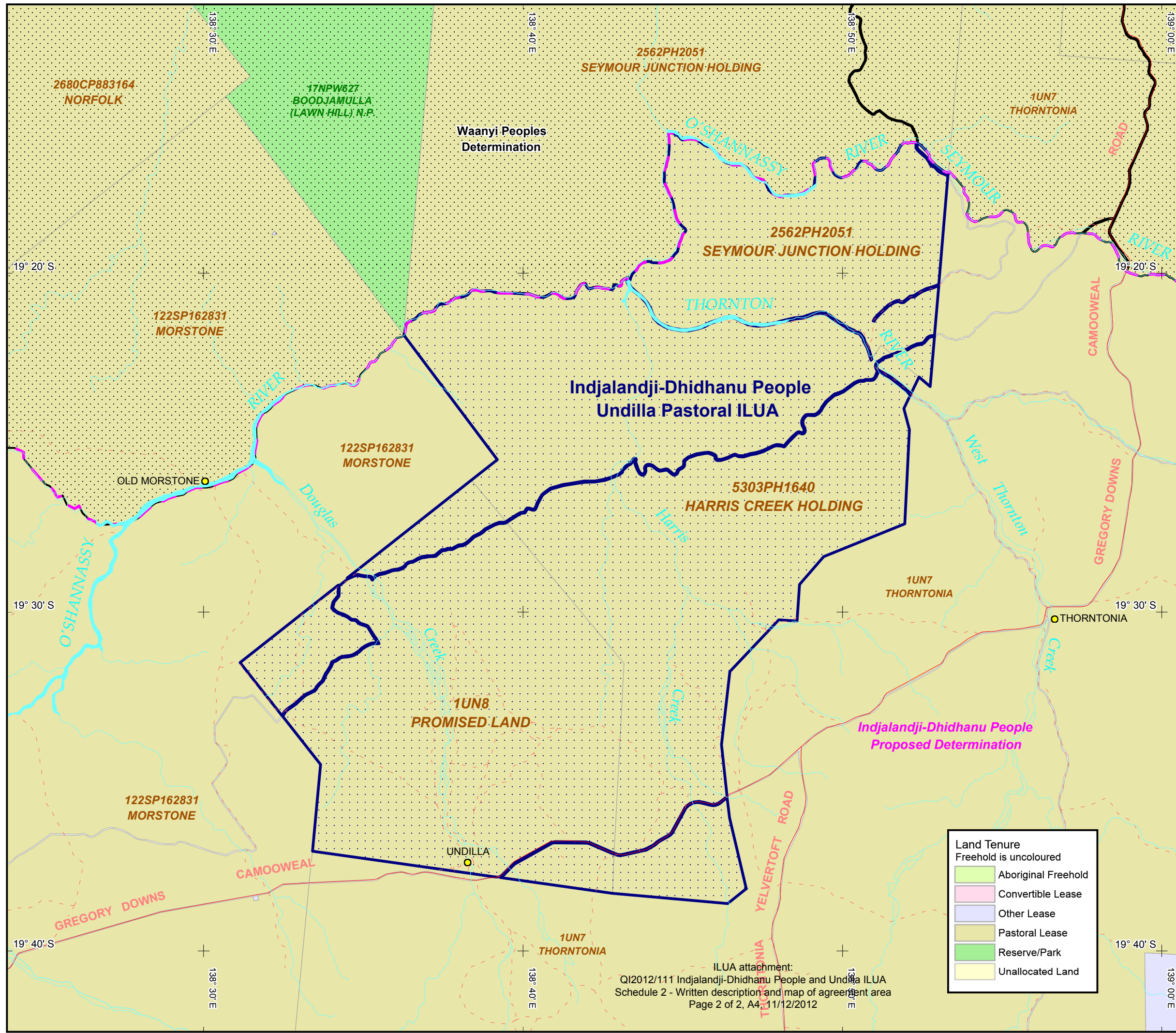
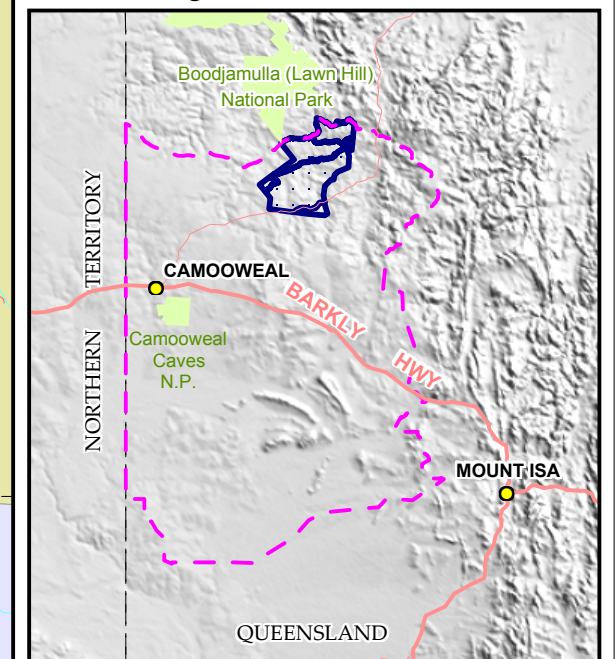
© Commonwealth of Australia 2012  
 The Registrar, the National Native Title Tribunal and its staff, members and agents and the Commonwealth (collectively the Commonwealth) accept no liability and give no undertakings, guarantees or warranties concerning the accuracy, completeness or fitness for purpose of the information provided. In return for you receiving this information you agree to release and indemnify the Commonwealth and third party data suppliers in respect of all claims, expenses, losses, damages and costs arising directly or indirectly from your use of the information and the use of the information you obtained by any third party.





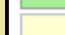
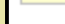


Latitude and Longitude based on Geocentric Datum of Australia 1994  
 Non Projection



### Location Diagram



Land Tenure	
Freehold is uncoloured	
	Aboriginal Freehold
	Convertible Lease
	Other Lease
	Pastoral Lease
	Reserve/Park
	Unallocated Land

ILUA attachment:  
 QI2012/111 Indjalandji-Dhidhanu People and Undilla ILUA  
 Schedule 2 - Written description and map of agreement area  
 Page 2 of 2, A4, 11/12/2012